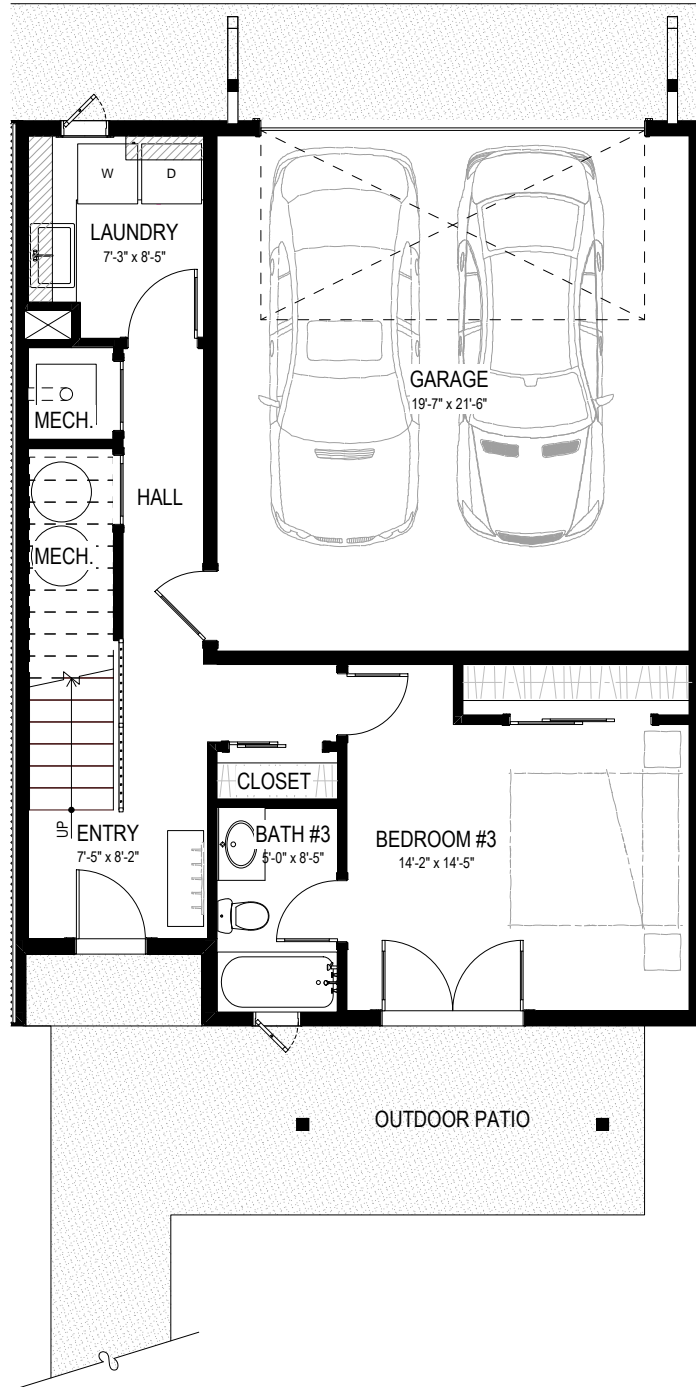


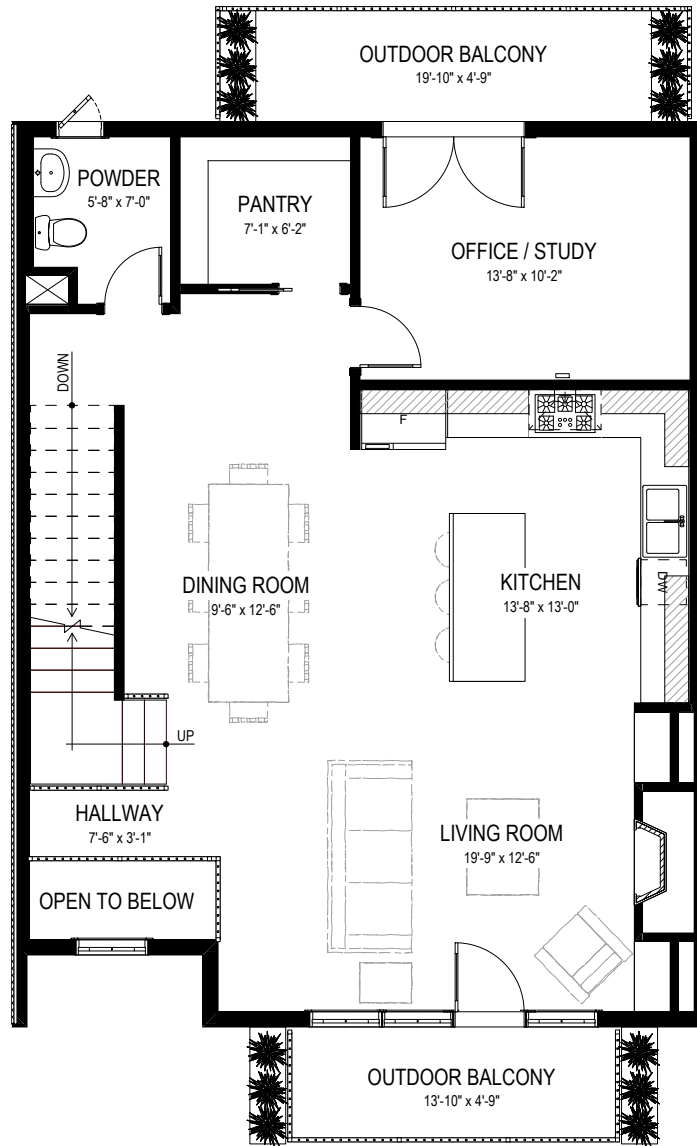
908 EAST LOGAN STREET



GARDEN LEVEL

LIVING AREA = 612sf
GARAGE AREA = 451sf

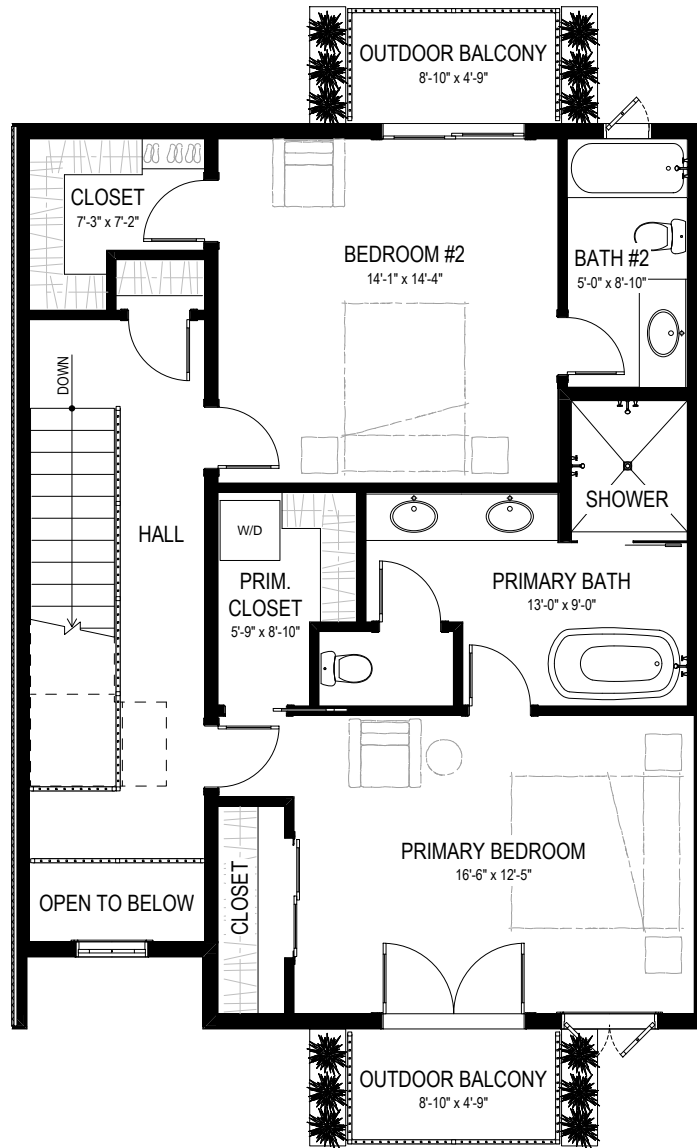
908 EAST LOGAN STREET



MAIN LEVEL

LIVING AREA = 1,037sf

908 EAST LOGAN STREET



UPPER LEVEL

LIVING AREA = 968sf