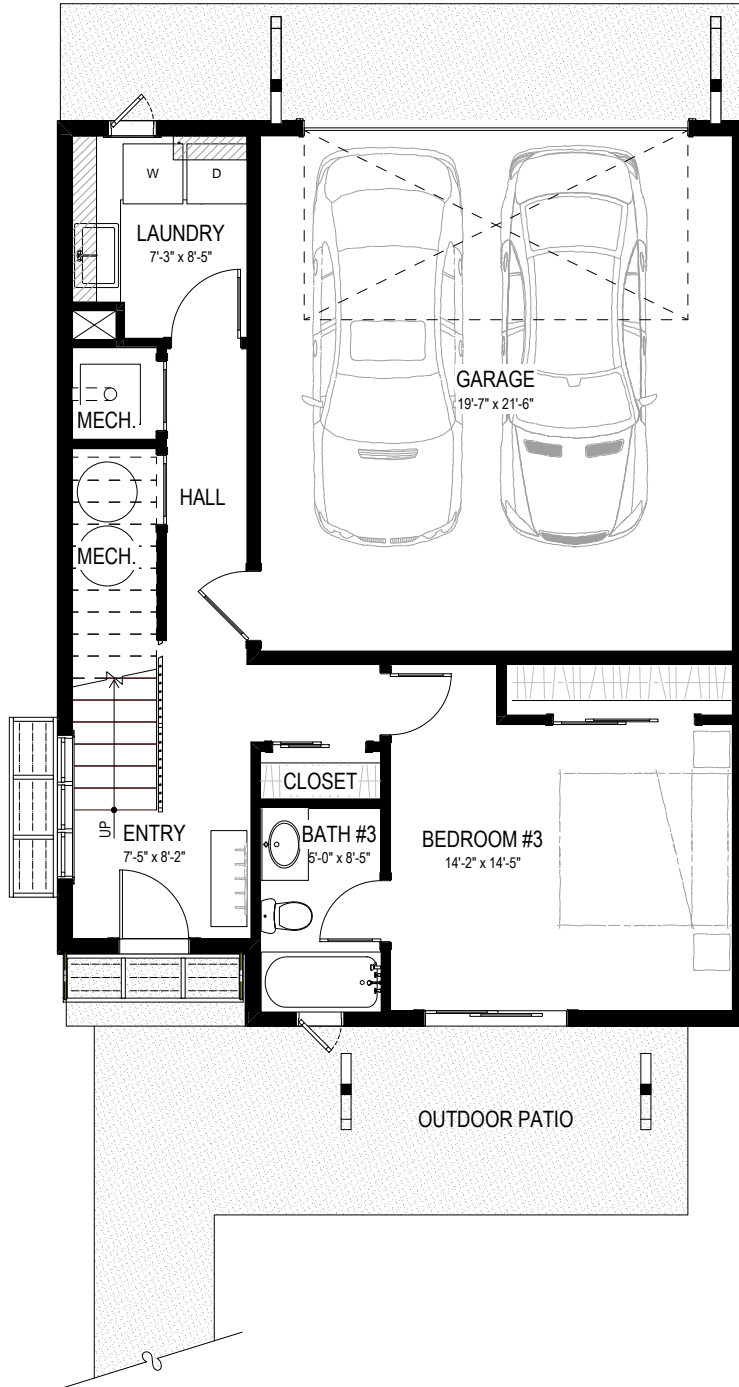


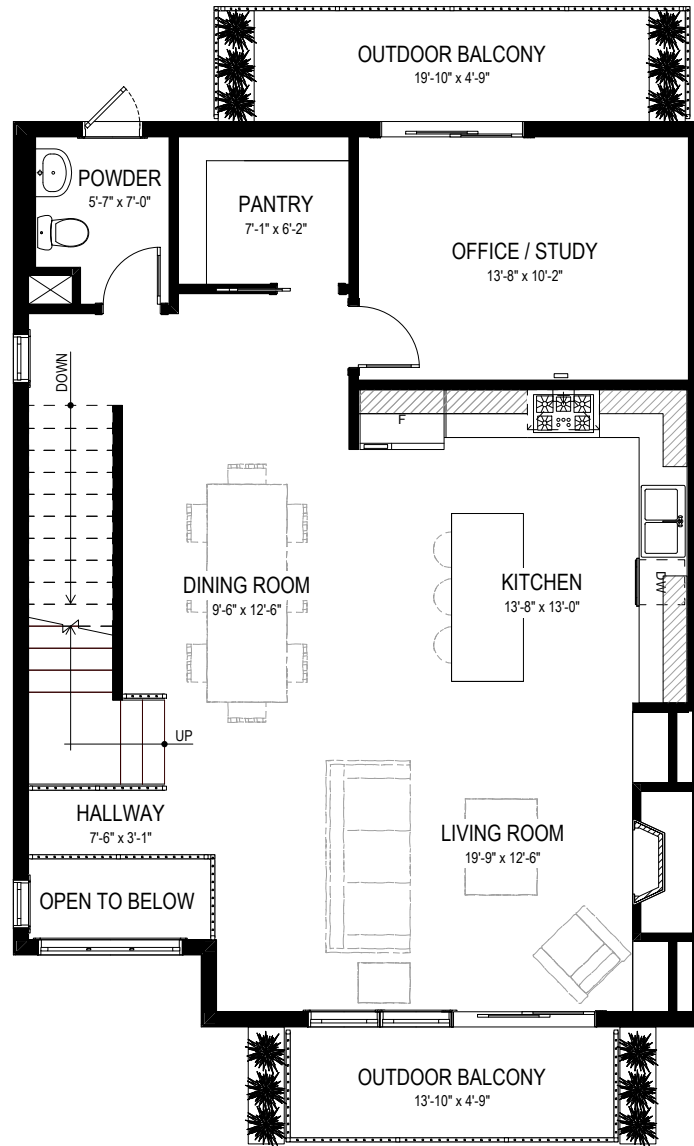
900 EAST LOGAN STREET



GARDEN LEVEL

LIVING AREA = 604sf
GARAGE AREA = 451sf

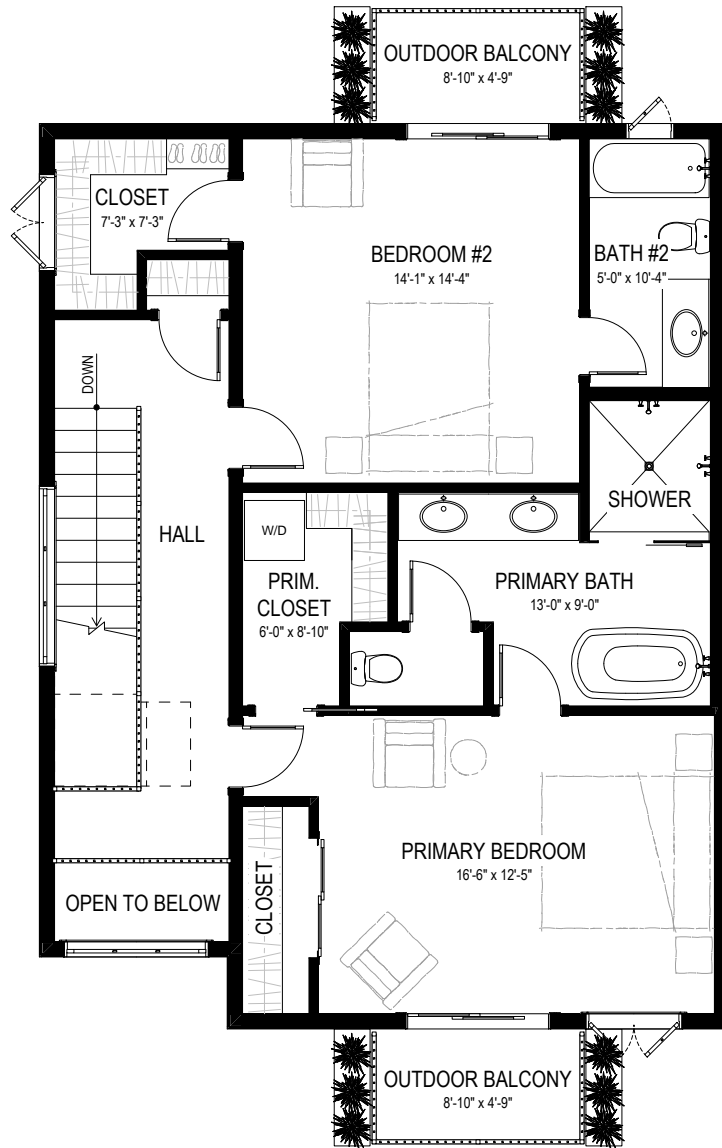
900 EAST LOGAN STREET



MAIN LEVEL

LIVING AREA = 1,028sf

900 EAST LOGAN STREET



UPPER LEVEL

LIVING AREA = 977sf